



# Activities and Enrichment Week

July 3<sup>rd</sup> and July 4<sup>th</sup>

These are the activities and trips available on Wednesday 3<sup>rd</sup> July and  
Thursday 4<sup>th</sup> July

## July 3<sup>rd</sup> and July 4<sup>th</sup>

- ▶ The Trips and Activities on the following pages will be running on the 3<sup>rd</sup> and 4<sup>th</sup> of July.
- ▶ Please note that the school reserves the right to withhold access to certain trips/activities due to mitigating factors such as behaviour at any point leading up to the trip/activity. This may result in any monies paid not being able to be returned.
- ▶ The trips/activities may have a cost associated with them. Until the numbers for each activity are finalised the trip/activity costs on this Powerpoint are a guideline. The finalised cost will be on ParentPay after half term.
- ▶ If you are eligible for Free School Meals and you have not used your Trips subsidy this can be used on these trips/activities
- ▶ Your parents/carers have been sent a Microsoft Form to fill in. This form must be completed by Friday 24<sup>th</sup> May.

## July 3<sup>rd</sup> and July 4<sup>th</sup>

- ▶ The lists will be compiled, payment requests and consents will then be on ParentPay shortly after half term.
- ▶ If you are doing Duke of Edinburgh then please note this will be expedition week for you. On the form please get parents/carers to tick the Duke of Edinburgh box.
- ▶ If you have been selected for the Dance Showcase on Wednesday July 3<sup>rd</sup> please tick the Dance Showcase.
- ▶ You will need to choose one activity per day.
- ▶ If there is the choice you can choose the same activity on both days. Unless restricted by year group.
- ▶ This will not be first come first served where a trip/activity is over subscribed a ballot will be held and students who have not been successful will be notified via email and have to make another choice.

## Year 7 and Year 8

Day trip to  
Chessington World of  
Adventures with your  
year group.

Approx Cost £50-£60



## Year 9 and 10

Day trip to Thorpe Park with your year group.

Approx Cost £50-£60



# DJ - ing

Onsite in the Music  
Department

Use the technology and  
facilities to improve your  
skills on the Decks with DJ  
Faulkner and Crew



## Portsmouth Historic Dockyard Year 7 and 8

A trip to Portsmouth's Historic Dockyard to see The Mary Rose, HMS Victory and various other Naval experiences.

Approx Cost £40



## Animal Care

Looking after the  
Animals and other  
associated  
activities with Miss  
Perou.





# Summer Sports

Onsite a day of Summer Sporting Activities to include Cricket, Stoolball and Rounders.



# Space Camp

Learning about Space  
for a day Building  
Rockets amongst other  
activities about our  
great Solar System.



## Summer Cookery School

Learn new techniques and skills in preparing some gorgeous dishes

Approx Cost £5 per day



# Stand Up Paddleboarding and Kayaking on the Cuckmere

SUP and Kayaking on the Cuckmere with Buzz Active leading both the activities

Approx Cost = £25



## Eco Beach School

Eco Beach Activities with Miss Green and the team. A day looking after our wonderful Beach and fun activities.



## Clay Art Workshop

On site Clay Art Workshop creating gifts and accessories which you can take away.

Approx Cost = £3



## Drama Workshop

A Drama Workshop with the Drama team creating some short pieces, developing your skills in a variety of ways.

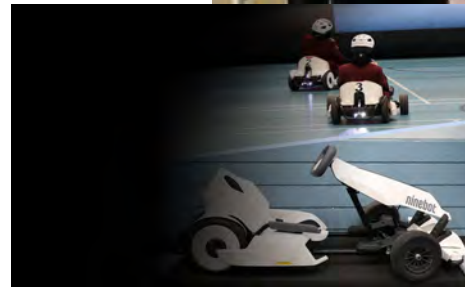


# STEM Go Karts - Year 7 and Year 8

Onsite.

Have a go on these Electric Go Karts and have a day designed around the racing and other design factors

Approx Cost £25





# Tournament Football

A Key Stage Football  
Tournament with small  
sided Games



# MarioKart Racing

Tournament MarioKart  
Racing.



## Rap/Improv

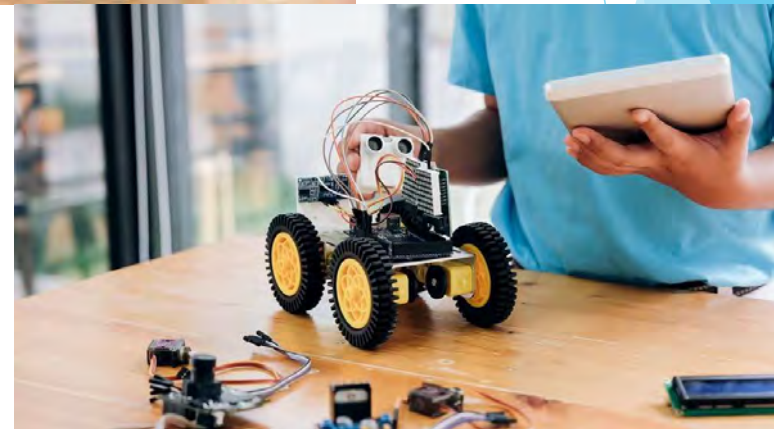
Onsite. Learn and develop your Rapping and Improv skills with Mr Vidon. Can you be the next Harry Mack?



# Robotics

Onsite. Working and developing new skills in the Robotics world.

Approx Cost = £3



## Warhammer/Dungeons and Dragons

You can choose your preferred Game. Play alongside your friends or new friends. Structured days with like minded people



## Local Walk

A guided local walk taking in local scenery and being at one with Nature.

